

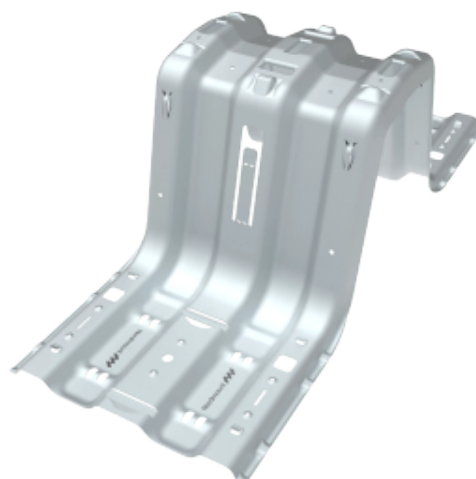
Art.nr: 8000

NM Flow Tower

NM Flow Tower is a tall base module for solar panel installation on low-sloped roofs. The wide profile provides the panels with a stable and generous contact surface, while the integrated panel support simplifies installation. The tower clicks together with the low base module to form a robust foundation, developed to withstand harsh weather conditions—without the need for additional fasteners. NM Flow Tower is patent pending: 2430491-7.

Performance

Our products are designed and tested to make installation as hassle-free, easy and safe as possible. Feel free to contact us if you have any questions, and we will be happy to help you.



Product details

Length	734 mm
Width	283 mm
Height	249 mm
Weight	3200 g
Panel tilt	10°
Panel width, position 1	984-1040 mm
Panel width, position 2	1118-1174 mm
Corrosion class	C4
Warranty	25 years
Made in	Sweden