

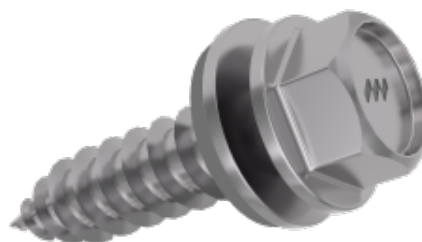
Art.nr: 63190300 (300 pcs), 63191000 (1000 pcs)

NM Screw

Solar panels are installed in harsh environments, placing high demands on attachments in building structures. The NM Screw is the smart choice when you are looking for a sheet metal screw that can stand up to our tough Nordic climate. This screw has been carefully adapted to withstand the constant challenges of heat, cold, moisture, vibration, corrosion and high loads.

Performance

Our products are designed and tested to make installation as hassle-free, easy and safe as possible. Feel free to contact us if you have any questions, and we will be happy to help you.



Product details

Length	19 mm
Diameter	6,3 mm
Grip	Hex 8 mm
Snow zone	1-5,5
Corrosion class	C4
Profiled aluminum sheet	Min 0,6 mm
Profiled steel plate	Min 0,4 mm